

2 Conseil Scientifique et d'Orientation



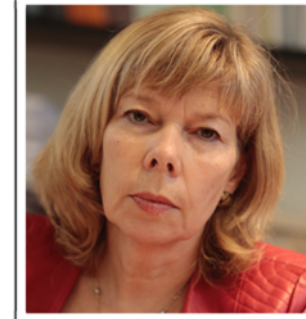
Florence Askenazy
Nice - Fondation
Lenal



M.F. Bacqué
Strasbourg - Université de
Strasbourg



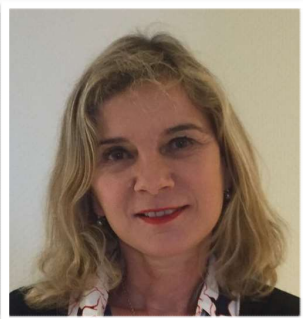
Khadija Charaoui
Dijon - Université de
Bourgogne



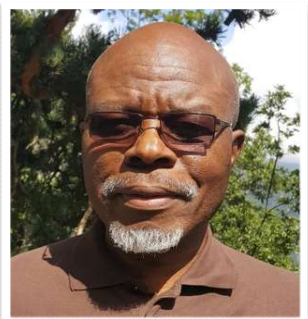
Carole Damiani
Paris- ALFEST



Francis Eustache
Caen - Université de
Caen
© Inserm/Mehrak



Dominique Fremy
Besançon - France
Victimes



René Garcia
Nice - ABC
Psychotraumas



Sarah Gensburger
Paris - CNRS

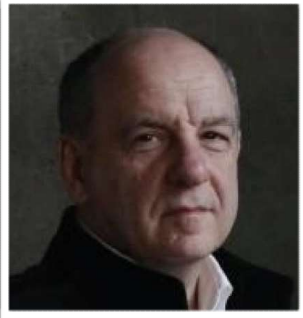


Louis Jehel
Martinique -
AFORCUMP / SFP



Marie-Christine Millequand
Lille - TRAUMAPSY

2 Conseil Scientifique et d'Orientation



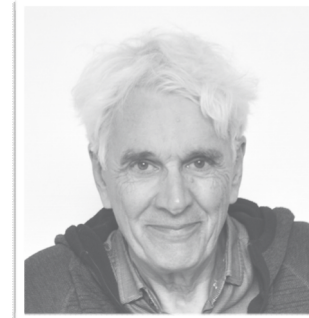
Denis Peschanski
Paris - CNRS



Nathalie Prieto
Lyon - CUMP



Nadine Ribet-Reinhardt
Paris - 13onze15



Jean-Luc Roelandt
Lille - CCOMS



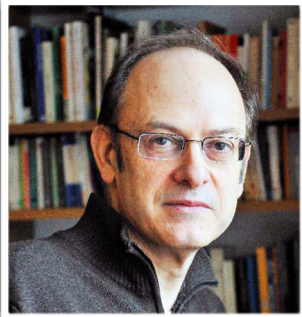
Ernestine Ronai
Paris - HCE



Françoise Rudetzki
Paris - CESE



M.C. Saglio-Yatzimirsky
Paris - Inalco / AHP



Denis Salas
Paris - Ministère Justice



Marion Trousselard
Paris - IRBA / ITMO



Stéphanie Vandentorren
Bordeaux - INSERM / SPF